

# THE ROCKHAMPTON

## ROCKHAMPTON DRIVE, OLD STONY HILL ROAD

### TECHNICAL DATA

AREA OF LAND

0.465 HECTARES (1.15 ACRES)

NO. OF HABITABLE ROOMS ALLOWED

30 HABITABLE ROOMS PER ACRE - AT 1.15 ACRES  
35 HABITABLE ROOMS ARE ALLOWED

NO. OF HABITABLE ROOMS PROPOSED

32 HABITABLE ROOMS

PROPOSED STRUCTURE

PER UNIT	TOTAL
1371 sq.ft.	11,016 sq. ft.
1110 sq.ft.	8930 sq. ft.
2487 sq.ft.	19846 sq. ft.
2#	16#
1#	8#

PROPOSED STRUCTURE (ground floor)

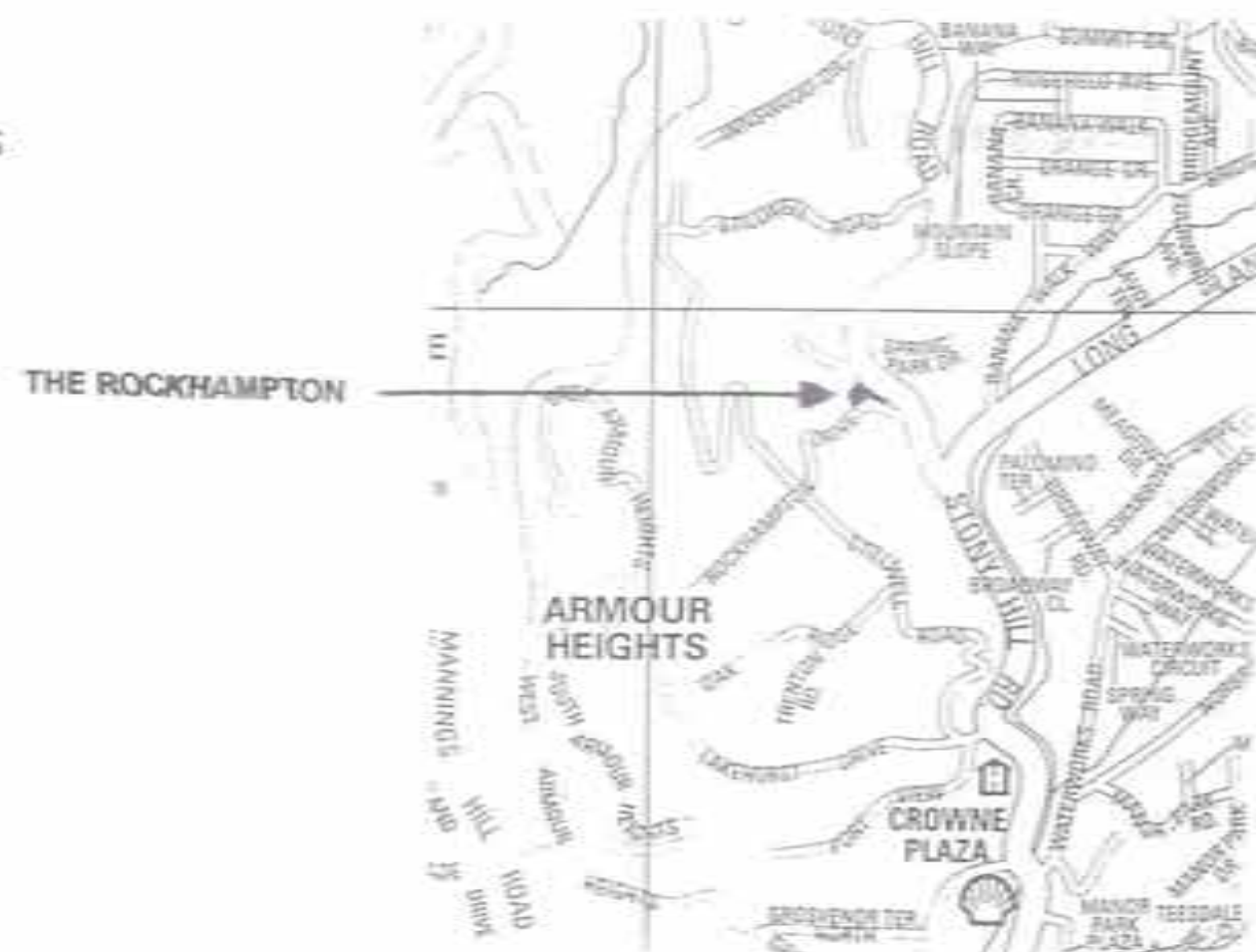
PROPOSED STRUCTURE (first floor)

TOTAL AREA PROPOSED

PROPOSED PARKING

PROPOSED VISTOR PARKING

### LOCATION MAP

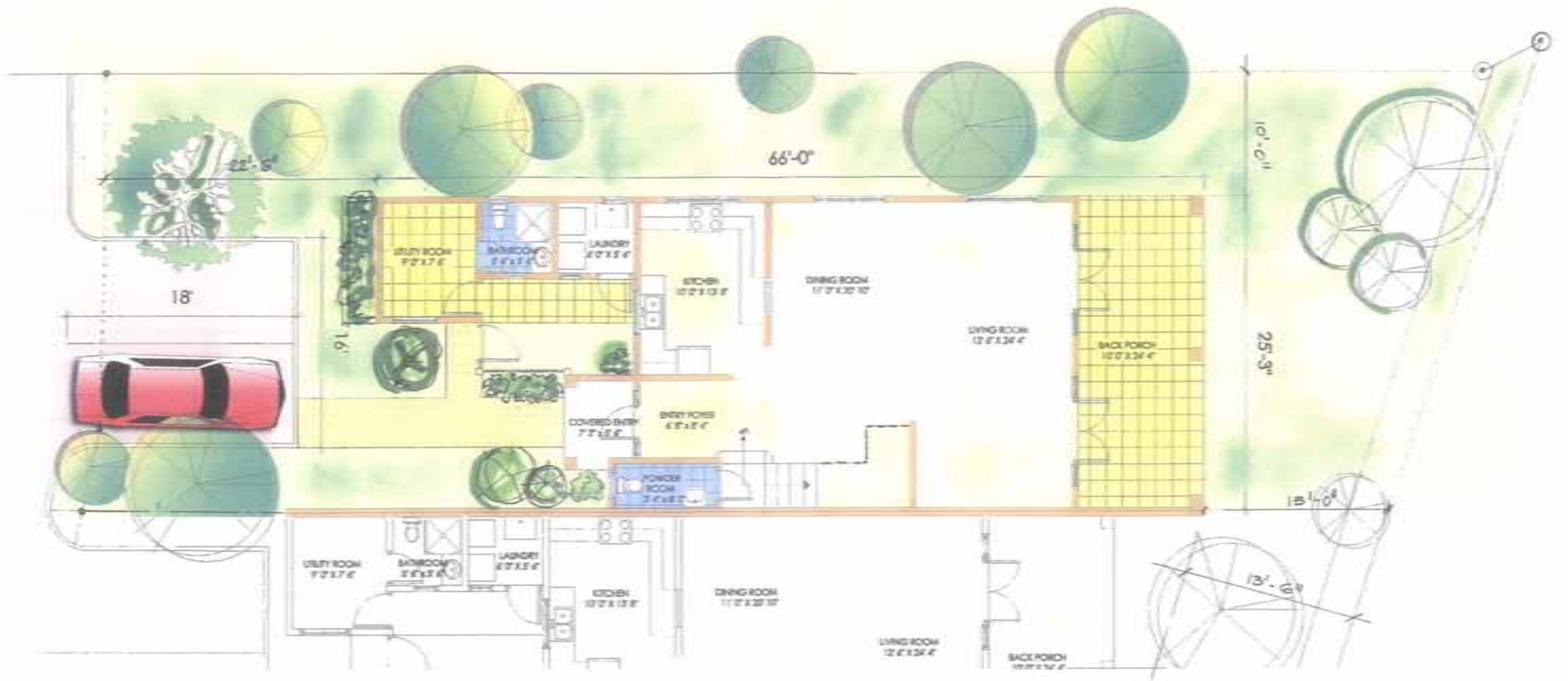




APPROXIMATE LOT SIZES	
SQ. FT.	
LOT 1	= 3571
LOT 2	= 2290
LOT 3	= 2335
LOT 4	= 2384
LOT 5	= 2337
LOT 6	= 3621
LOT 7	= 3323
LOT 8	= 3199

SITE PLAN

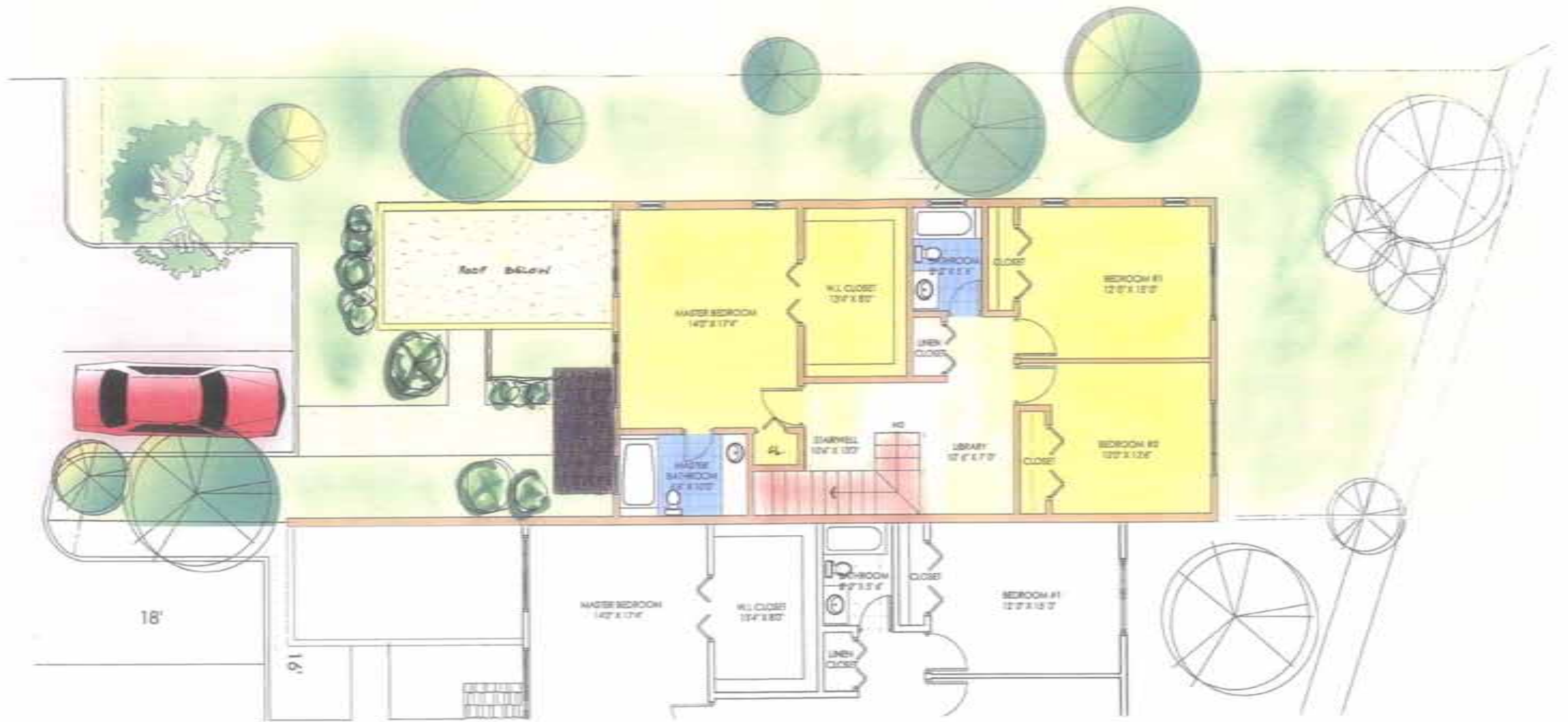




END UNIT GROUND FLOOR



SCALE: 1/8" = 1'-0"



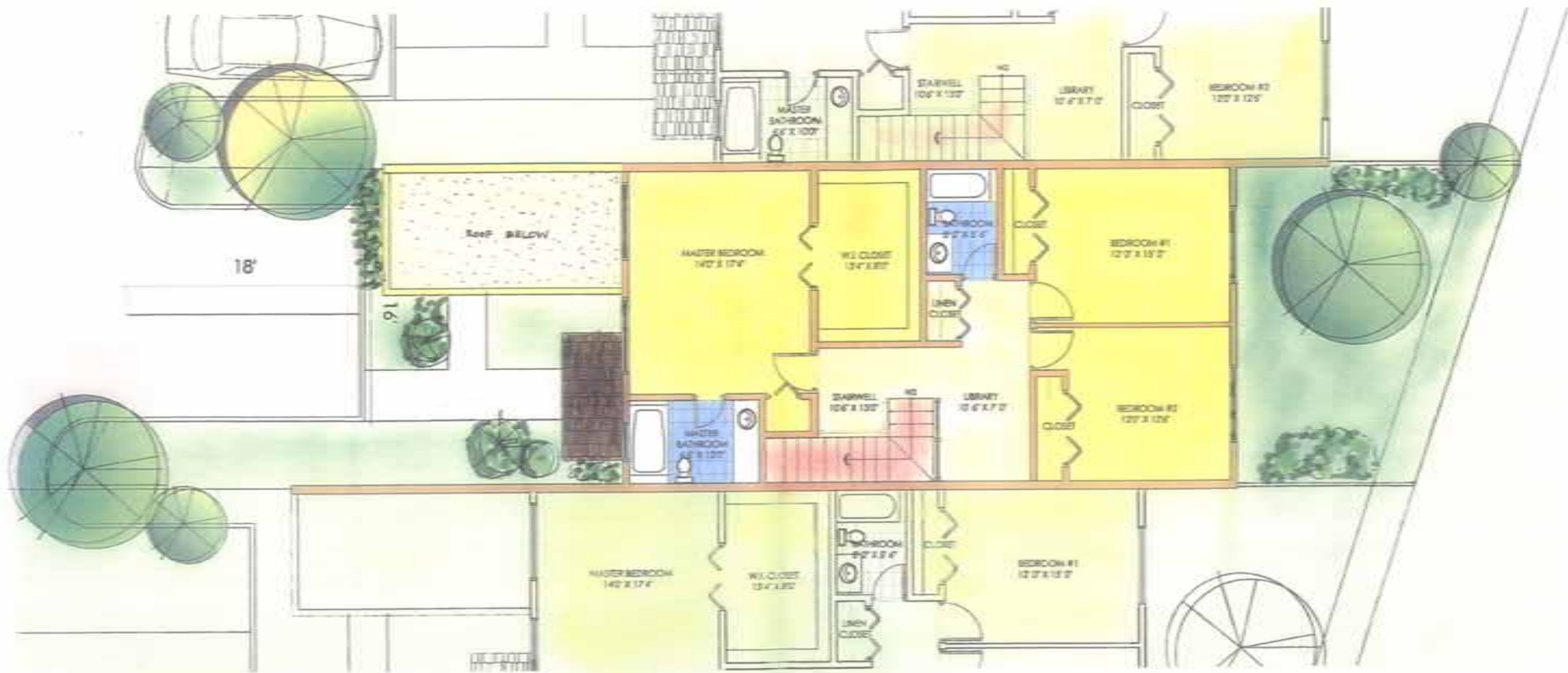
END UNIT FIRST FLOOR PLAN





INTERNAL UNIT GROUND FLOOR PLAN



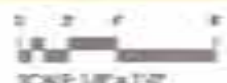


INTERNAL UNIT FIRST FLOOR PLAN





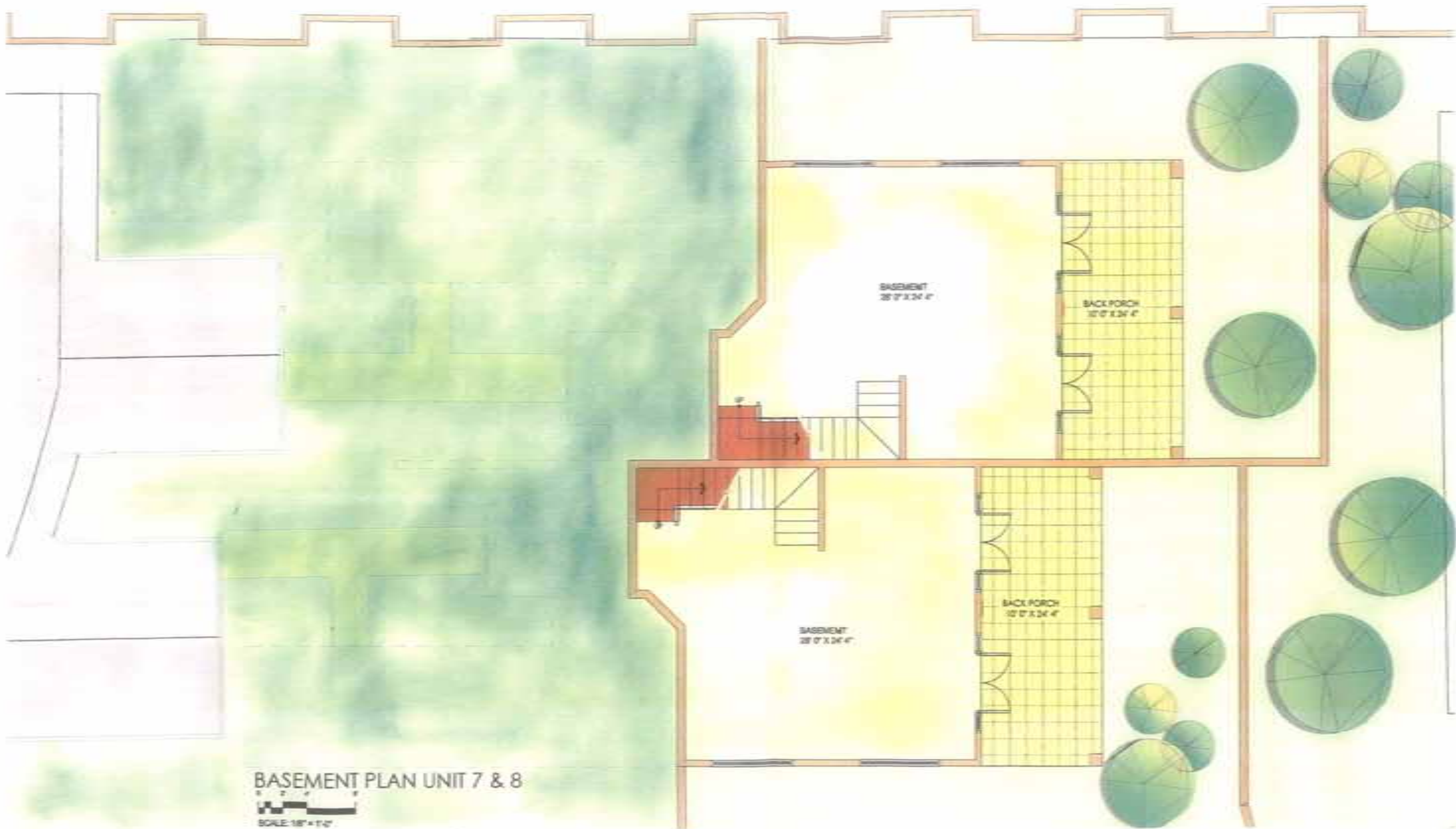
ENTRY ELEVATION





REAR ELEVATION





BASEMENT PLAN UNIT 7 & 8

SCALE 1/8" = 1'-0"

Basement = 920 sq ft