

PROPOSED HOUSING DEVELOPMENT

# CASA MONTE - VILLAS & APARTMENTS

OLD STONY HILL RD. ST. ANDREW

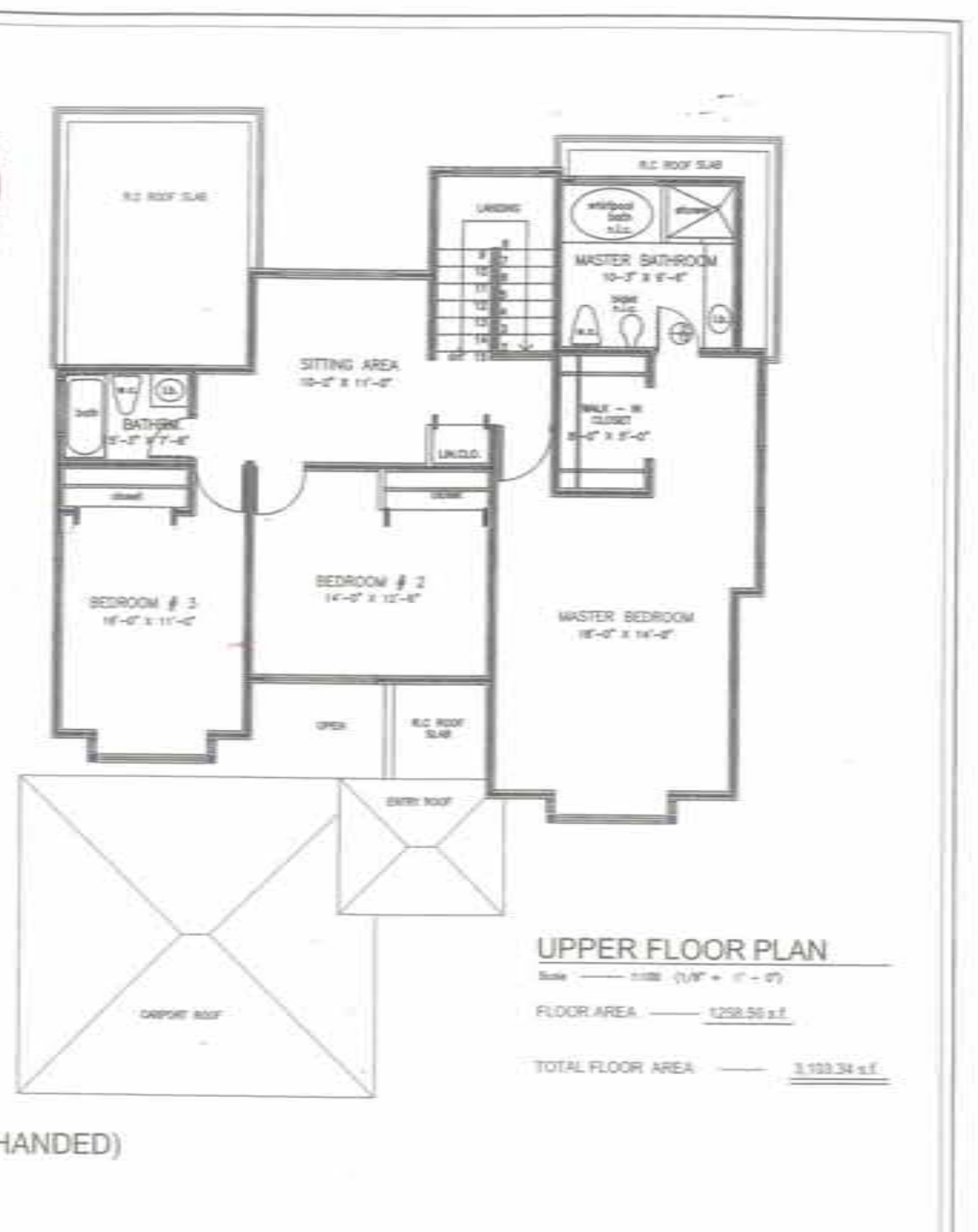






SITE PLAN  
SCALE 1" = 40'-0"

OLD STONY HILL ROAD



(UNIT #12 - #11 HANDED)



**GROUND FLOOR PLAN**

Scale 1/8" = 1'-0"

ENTRY PORCH	185.11 s.f.
CAR PORT AREA	360.00 s.f.
PATIO AREA	218.17 s.f.
<b>GROUND FLOOR AREA</b>	<b>763.28 s.f.</b>

**UPPER FLOOR PLAN**

Scale 1/8" = 1'-0"

FLOOR AREA	1220.78 s.f.
<b>TOTAL FLOOR AREA</b>	<b>1984.06 s.f.</b>

(UNITS # 9,10,15,16 &17 - #13,14 & 18 HANDED)



**BASEMENT PLAN**

Scale ——— 1/4" = 1' - 0"

TOTAL AREA ——— 1220.00 s.f.

(UNITS # 9, 14 & 15.)